

Description

UltraTech **TILEFIXO YT** is a polymer modified, white cement-based, high performance, high strength and high quality tile adhesive developed to fix glass mosaic, italian marble, marble and special tiles. Suitable for both internal and external, thin bed applications.

Specification

Technical Parameters complies with **IS 15477, EN 1348**.

Features & Benefits

- Excellent bond strength
- No shrinkage
- Easy to spread
- Nil wastages
- Single component, no hassles of mixing the ingredients
- No curing required
- High slip resistance
- Consistent in quality
- Superior whiteness

Areas of Application

UltraTech **TILEFIXO YT** is recommended for fixing glass mosaic, marble and translucent tiles. It is also recommended for tile-on-tile, tile-on-mosaic, tile-on-cement floors. Suitable for wall & floor applications.

METHOD OF APPLICATION

Surface Preparation



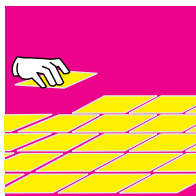
- Prepare the surfaces before the tile adhesive application by removing oil, bond inhibiting agents, dirt, dust and laitance. The cleaning can be carried out with suitable methods like by using wire brush, water jetting, mopping, etc.
- UltraTech **BASEKRETE** is recommended over vertical surfaces and UltraTech **FLOORKRETE** for horizontal floor areas to level the surface in case of higher undulations or for any repair works to attain the flat, stable and normal absorption background prior to UltraTech **TILEFIXO YT** application

Mixing



- UltraTech **TILEFIXO YT** requires 25% of water by weight of material (4 parts of tile adhesive and 1 part water)
- Mix UltraTech **TILEFIXO YT** to the measures quantity of water using mechanical stirring for 2-3 minutes to ensure a consistency free of lumps
- Allow to stand for 2 minutes for the mix to mature and then remix to use
- Do not add any extra water to alter the mix consistency or to extend the pot life. Further water additions will hamper the adhesion strength of the tile adhesive

Application



- Apply the mixed UltraTech **TILEFIXO YT** to the prepared substrate using the appropriate notched trowels for the size of the tiles being laid
- A minimum of 3-6 mm bed thickness of tile adhesive for walls and floors must be achieved
- Lay tiles onto the adhesive, firmly press the tile on to the adhesive to ensure good initial bonding and do not disturb tiles until the adhesive has set
- No pre-wetting of tiles is required while using UltraTech **TILEFIXO YT**
- It is recommended to fix the tiles within 30 minutes of spreading of UltraTech **TILEFIXO YT** to achieve the adequate bonding as per the technical data provided
- Any tile fixing after 30 minutes will lead to improper adhesion and may result in de-bonding of tiles
- For vertical area applications, tiling should start from bottom to top
- For tile-on-tile, tile-on-mosaic, tile-on-old cement floor application, care should be taken to prepare the existing base with adequate interlocking friction effect by removing polish/wax/top smooth layers

TECHNICAL DATA AS PER RELEVANT IS AND ASTM STANDARDS

Bulk density	1450-1550 Kg/m ³
Water powder ratio	25%
Pot life	1 hour
Open time	30 minutes
Adjustable time	30 minutes
Usage time post application	24 hours
Compressive strength @ 28 days	10-12 N/mm ²
Slip resistance @ 40 Kg/m ²	0 mm
Coverage @ 6 mm per Kg	2 sq.ft.

Tech Parameters	Std. as per IS 15477	TILEFIXO YT values as per IS 15477	Std. as per EN 12004 (Test Method EN 1348)	TILEFIXO YT values as per EN 1348
Tensile Adhesion @ 28 days	N	N	MPa	MPa
Dry Condition	750	1100	> 1.0	1.6
Wet Condition	450	900	> 1.0	1.4
Shear Adhesion	KN	KN	MPa	MPa
Dry Condition @ 24 Hours	4.0	6.5	> 1.0	1.1
Dry Condition @ 14 days	10.0	11.0	> 1.0	1.3
Wet Condition @ 14 days	5.0	7.0	> 1.0	1.4
Heat Ageing Condition @ 14 days	5.0	7.0	> 1.0	1.4

Note

- Allow a minimum of 24 hours for the subsequent usage of the tile fixed areas. Do not tile if temperature is likely to drop to below 5°C or exceed 50°C. For temperature below 20°C allow the adhesive to cure for an extended period of time. Pot life, open time and adjusting time depends on the surface absorption, wind factor, temperature, humidity conditions at site
- The technical data provided in this technical data sheet is as per our internal lab testing and may vary as per the actual method of application at sites
- Consult UltraTech Building Products Division Technical Services Cell for any further technical assistance

Safety Directions

- UltraTech **TILEFIXO YT** is non-toxic. Use of gloves and goggles recommended. Any splashes to the skin or eyes should be washed off with clean water immediately
- In case of prolonged irritation, medical advice should be sought. UltraTech **TILEFIXO YT** is non-flammable

Packaging

20 Kg, 25 Kg

Shelf Life

- UltraTech **TILEFIXO YT** has a shelf life of 12 months from the date of manufacture. Store at a cool and dry place

Precautions

- Not suitable for tiling over flexible substrates, such as fibrous cement sheeting, plasterboard and timber
- Not suitable for tiling directly onto timber, plywood or glass
- Not suitable for tiling directly on to metals or plastic substrates
- Not suitable for tiling directly onto polyurethane membranes
- Not suitable for moisture sensitive tiles or stone
- Do not mix or apply adhesives in temperature below 5°C and above 50°C and under extreme hot and windy conditions

Other Product Categories available with UltraTech Building Products Division

- Micro Concrete and Repair Mortar
- Industrial/Precision Grout and Anchors
- Waterproofing and Injection Grouting Material
- Plasters and Jointing Mortar
- Floor Screeds & Masonry
- Autoclaved Aerated Lightweight Concrete Blocks

DISCLAIMER

Information provided on this data sheet is the guideline for usage. Users are advised to undertake a trial for product suitability prior to its full scale usage. There is no implied guaranty/warranty for the results and the company is not liable for any consequential damages.



UltraTech Cement Limited (Building Products Division)

Regd. Office: 2nd Floor, B-Wing, Ahura Centre, Mahakali Caves Road, MIDC, Andheri (East), Mumbai - 400 093. India | Tel.: +91-22 6692 8200 | Email: ultratech.care@adityabirla.com

Website: www.ultratechcement.com | Toll Free: 1800 210 3311

Regional Offices: ● Bangalore: 080 22250748 ● Hyderabad: 040 42024194

● Pune: 020 41486600 ● Ahmedabad: 079 49004545 ● Indore: 0731 2543206

